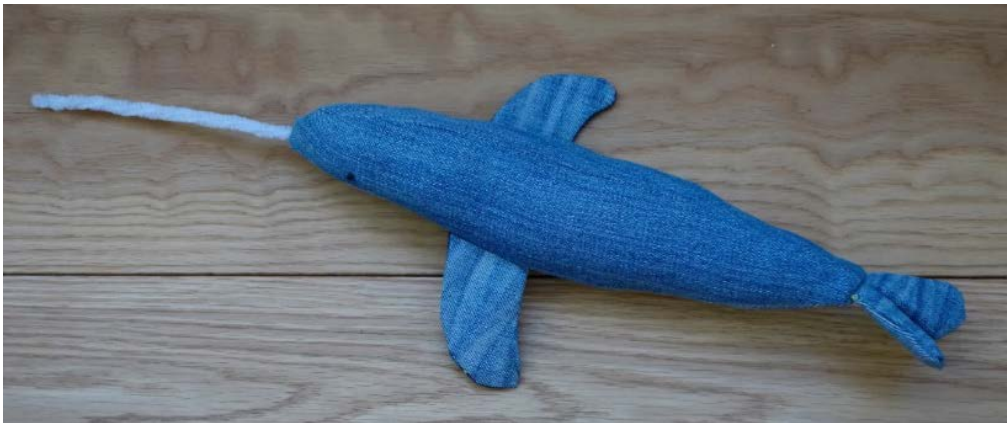


How to make a Narwhal



The narwhal is a relative of the beluga whale. Both types of whale are medium sized and live in Arctic waters all year round.

Narwhals are sometimes called the *unicorns of the sea* because of their large, spiralled tusks. The tusk is actually an overgrown, elongated canine tooth that is highly sensitive. Most males grow a tusk and some females do too. Some male narwhals have two tusks, whilst some females have no tusk at all. These spiralled tusks can grow up to around 3m long and weigh up to 10kg. Researchers are still trying to find out exactly what the tusk is used for.

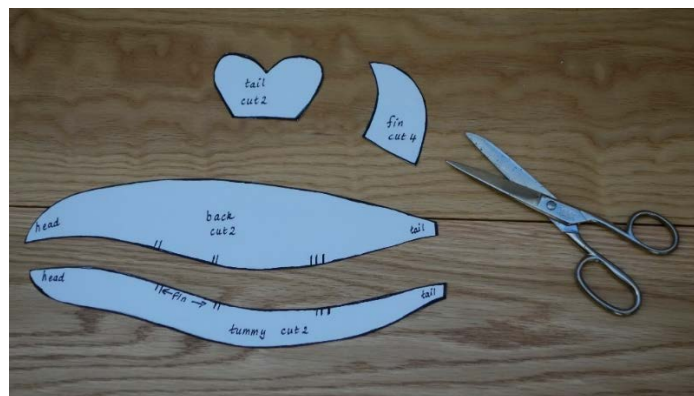
In the past the spiralled tusk was highly prized. It is said that Queen Elizabeth I paid £10,000 for a narwhal or sea-unicorn tusk and commanded that it be kept locked up with the crown jewels.



1. Make sure that you have all the equipment that you need. If you don't have access to a sewing machine, the narwhal can be hand-sewn instead.

You will need: fabric, stuffing, thread to match the fabric, a pipe cleaner for the tusk, pins, scissors, an iron, a sewing machine, marker pencil or pen, something for the eyes (buttons, beads, felt or different coloured thread or wool).

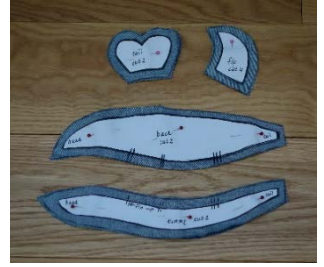
If you are making the narwhal as a toy for a child replace the pipe-cleaner tusk with a rolled fabric tusk and stitch the eyes to avoid choking hazards.



2. Print and cut out the 4 pieces of the pattern (at the end of this pack): back, tummy, fin and tail.



3. Decide which is the right side / wrong side of your fabric or fabrics. Are you going to use just one type of fabric or a number of different pieces? If you are using denim, you might want to use the wrong side as the tummy pieces.

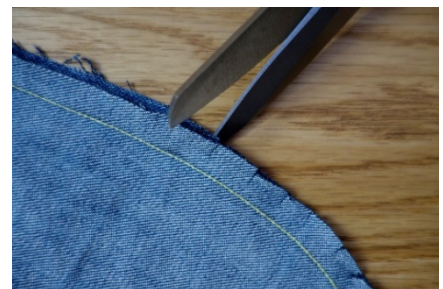


4. Fold the fabric in half so that the right sides are facing inwards. Pin the pattern pieces to the fabric and mark both the shape of the pattern piece and an extra 0.5-1cm all the way around each piece for your seam allowance. Then cut out around the outer lines. Make sure that you mark the extra lines on to the back and tummy pieces. These lines will help you match the pieces together later on.



5. You should now have 10 fabric pieces in total. 2 backs, one right and one wrong side. 2 tummies, one right side and one wrong side. 2 tails, one right side and one wrong side. 4 fins, two right sides and 2 wrong sides. Make sure that you have marked out the sewing lines on every piece of fabric.

I will be using the wrong side of the denim for the tummy plus a different fabric for the underside of each fin.



6. Pin the right sides of the 2 backs together and sew along the inner stitch/seam line. Use scissors to trim and snip towards the seam along the curve. This helps to neaten the curve.



7. Turn the back right side out and iron into the curve so that you there is a neat seam.



8. Pin the right sides of the 2 fins together and sew along the inner stitch/seam lines. Don't sew the base of the fins as this is where you will turn them inside out! Use scissors to trim and snip towards the seam along the curve.



9. Turn the fins inside out carefully using a pencil to help you get into the pointy corners. Then iron them flat.



10. Pin the underside of the fin to the right side of the upper tummies (approx. 8cm from the head) and stitch outside the sewing line.



11. Match the lines and then starting from the head, carefully pin the tummy in place following the curve.

This can be tricky so take your time.



12. This is the most complicated part so it's best to hand-sew or tack it in place. Make sure that the fin is still tucked out of the way so that it doesn't get caught in the seam.

Remove the pins and machine sew along the seam line. Remove the tacking then use scissors to trim and snip towards the seam along the curve. On the wrong side, iron in to the curve.



13. Repeat for the other side. The narwhal is beginning to take shape.





14. With the right sides together, fold the narwhal in half lengthways. Tuck the fins out of the way. Stich 2 short lines along the underbelly, leaving gaps at the tail, head and an 8cm gap in the middle of the underbelly. This will be where you turn the narwhal inside out. Trim and snip the curved seam.



15. Turn the narwhal right side out to check that it looks correct. Remember that there will still be holes at the head and tail ends.



16. Pin the right sides of the 2 tails together and sew along the stitch/seam line. Don't sew the base of the tail as this is where you will turn it inside out. Use scissors to trim and snip towards the seam along the curve. The tighter the curve the more snips are needed.



17. Turn the tail inside out. You might need to use a pencil to help you get into the curve. Iron the tail flat.



18. Add a tuck into the tail so that it is approximately 2cm wide at the base. Hand stitch it.



19. Pin the tail base to the right side of the back and tack into place.



20. Carefully turn the tail end of the narwhal inside out so that the tail is tucked inside.

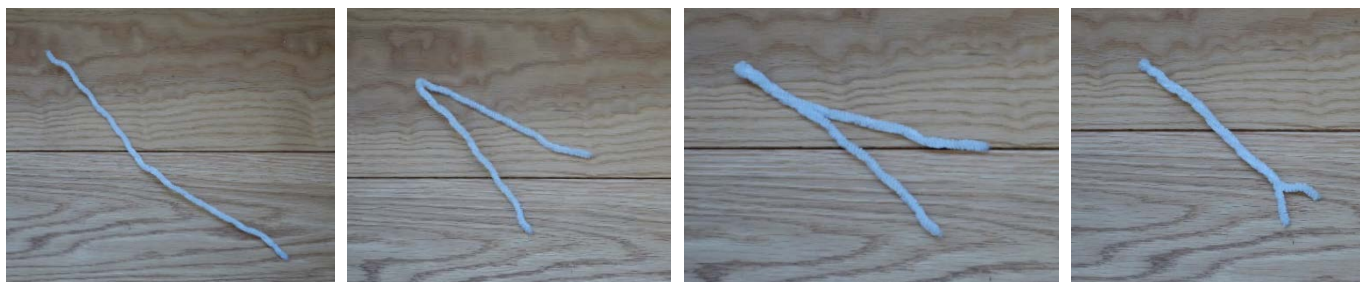
This is fiddly so take your time.



21. Sew across the base of the tail and trim the seam.



22. Turn the narwhal back to the right side. The tail should now be in place.



23. Take a pipe cleaner, fold it in half and twist it. Make sure that the 2 ends are not too tightly twisted as you will need to unwind them in the next stage. The tusk should be approximately half the length of the body of the narwhal.

If this is being made for a child, please do not use a pipe cleaner but make a shorter tusk from twisted fabric instead. The twist will need to be held in place by hand stitching.



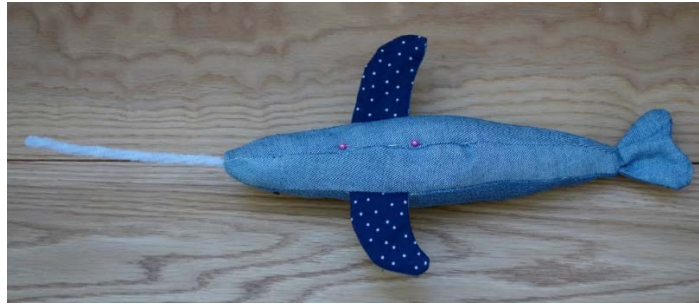
24. Carefully thread the end of the tusk through the opening in the head. The tusk should be approximately half the length of the narwhal body.



25. Turn the head inside out. About 1.5/2cm of the tusk will be on the inside of the narwhal. Open up the ends of the pipe cleaner and hand sew the tusk in place. You might need to hand sew any remaining open bits of the head too.



26. Now, starting at the head, gradually add the stuffing in to the narwhal. Keep checking on the shape so that it doesn't become too lumpy.



27. Pin the opening and hand sew it. Snip off any loose threads.



28. The final stage is to add eyes. These could be hand sewn with different colour thread, pieces of felt, buttons or beads.

If this is being made for a child, do not use buttons or beads as they could be a choking hazard.

29. Share your creation with us! (Optional)



facebook.com/polarmuseum | twitter.com/scottpolar | instagram.com/scott.polar/

Make a Narwhal TEMPLATE

