






SUPPORTING POLAR
SCIENCE AND HERITAGE

www.spri.cam.ac.uk/friends

INSIDE THIS ISSUE:

-  Heritage collections news – page 2
-  We are going North! – page 3
-  Modern day explorers – page 3

POLAR BYTES

ISSUE 076 / SUMMER 2015

Loyal readers since 1996



Photo © Caro Mantella

The Return of a Little Warrior



Written by
Dr Robb
Robinson

The steamer *Viola* – now named *Dias* – which today lies at Grytviken, has had a remarkable career.

Built in Beverley in 1906 as a North Sea trawler, then requisitioned and armed by the Admiralty, it served in the Great War. Later this little ship was a Norwegian whaler then South Georgia sealer and occasional exploration vessel. Today it is the world's oldest surviving steam trawler, one of only a handful of remaining craft which saw action during the First World War.

Plans are afoot to try and return the vessel to Hull, its first home port. Thanks to the drive and crucial financial support of Paul Escreet, Chairman of SMS Towage Ltd, and a number of Hull marine firms, the vessel has been surveyed and a subsequent feasibility

study has been produced by Beverley-based Solis Marine outlining the best options for returning the vessel to the UK. Hull City Council is also supporting the campaign and would like to incorporate it into their plans for a re-vamped waterfront.

To carry these aims forward, Paul Escreet, Rear Admiral Nick Lambert and Dr Robb Robinson have been formulating plans to create a *Viola* Trust and are attracting the support of a number of influential individuals and companies. Heather Lane, formerly of



Left: *Viola*, the bell and Elsa Davidson, former curator.

A tribute to Sir Jack Hayward



SS Great Britain
© Hugh Llewelyn

In 1976 Sir Jack Hayward gave £150,000 to pay for the salvage of Brunel's SS Great Britain. The iconic ship that so desperately needed rescuing and restoring from its watery grave in the Falklands was taken to her original dock in Bristol. Sir Jack later invited Paul Getty Jnr to match his £500,000 to complete the vessel's restoration. Perhaps the *Viola* will meet a Sir Jack!

SPRI, is also on board and contributing her expertise. As the swell of support continues to grow perhaps this extraordinary little trawler that today lies in the shallows of Cumberland Bay may one day go home.

Thank you to SMS Towage Ltd, UK leader in harbour towage and worldwide offshore towage for their generous support

SMS
TOWAGE LIMITED



Welcome to our Summer Polar Bytes newsletter

Our very successful June Summer Lunch especially featured Emma Stibbon's fabulous artwork from her Antarctica foray as the Artist in Residence (AiR) onboard HMS PROTECTOR in 2013. Emma explained her techniques and how the land and seascapes influence her work.

Unhindered by PowerPoint slides, Richard Ralph entranced us with a revealing, candid and robust exposition of life as Governor of the Falkland Islands in the mid-nineties.

John and Elizabeth Peake's generously donated book collection **raised over £300 pounds** in the sale and we thanked Arlette Betts who runs a guesthouse in Port Stanley and is a great supporter of the AiR programme. The Committee met the same day, focusing on finances and budgeting in the wake of recent generous funding by One Ocean Expeditions, Ice Tracks Ltd and the late Charles Swithinbank.

We also **bid a sad farewell to Heather Lane**, a stalwart of the Institute and the Friends for a decade. Her amazing work transformed the Polar Museum and the Library, and undoubtedly leaves an indelible legacy. Good luck in Yorkshire Heather!

See you all at the AGM in November!

Nick Lambert, Chairman

From the Institute



A few words from
Director Julian Dowdeswell
Email: director@spri.cam.ac.uk

Preparations have taken place at the Institute during the spring and early summer for this year's Arctic field programmes. A group from the SPRI has already departed for West Greenland where investigations of the flow of Store Glacier and the waters of the adjacent fjord are taking place, aided by the deployment of cameras flown aboard hand-launched drones. In our laboratories, research students also continue to monitor the changing pattern of crevasses and the production of icebergs from the marine margins of the glacier. The combination of field observations and repeat satellite imaging of glaciers provides considerable evidence with which to calibrate and test computer-model simulations of past, present and possible future ice-sheet behaviour; our staff and students are involved in all three of these activities.



Above: The snow-capped mountains of Prins Karls Foreland, western Svalbard, from Helmar Hanssen.

I shall be leaving for Svalbard in September, for marine-geophysical work and sea-floor sediment sampling from the Norwegian research vessel Helmar Hanssen, in collaboration with scientists at the University Centre on Svalbard. Our aim is to collect evidence on the past extent and dynamics of the large ice sheet that extended north of Svalbard at the Last Glacial Maximum (about 20,000 years ago), and the timing of subsequent deglaciation and ice retreat. The results of this work provide valuable evidence on the speed with which past ice sheets have changed in response to varying atmospheric and oceanographic conditions.

News from the Heritage Collections



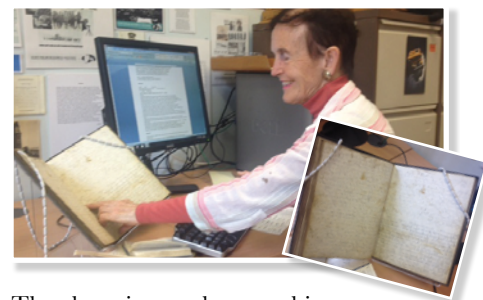
From the Archives Manager, Naomi Boneham and Antarctic Project Cataloguer Greta Bertram Email: archives@spri.cam.ac.uk



June saw us celebrate National Volunteers Week. For anyone visiting the museum our front of house volunteers are the first people you meet and without them we wouldn't have a museum open to the public! Around 40 volunteers work in the museum and others are essential in helping run events attended by over 5000 people each year.

Behind the scenes are even more volunteers that work in the Archive and Library, on anything from listing hut plans to keeping up-to-date with the polar world as reported in the news.

Over the years many of the Friends have volunteered their time, and to them and to our present dedicated group, we would like to say a big thank you.



The above image shows archive volunteer Deirdre Hanna working on the shorthand diary of Raymond Priestley. This diary was written in an ice cave when Priestley along with five companions was forced to overwinter during Scott's Terra Nova Expedition. Here she is transcribing the events when Frank Browning had killed a seal which turned out to have undigested fish in its stomach providing the six stranded men with additional food.

Would you like to get involved?

We are presently looking for volunteers for our biographies project. If you would like to find out more about volunteering in the Museum email: museum@spri.cam.ac.uk; for volunteering in the Archives email: archives@spri.cam.ac.uk; and for volunteering in the Library email library@spri.cam.ac.uk.

We are going North!

Written by
Angie Butler

Image © Caro Mantella

FRIENDS OF SPRI SPITSBERGEN EXPLORER SETS SAIL ON 13TH JUNE 2016. JOIN US!

Following the fabulous Friends of SPRI Shackleton Centenary voyage 2014 we are thrilled to announce that we are now going North! The 9 night Friends of SPRI Spitsbergen Explorer sets sail on 13th June 2016!

Not only did the Antarctic voyage raise a considerable sum of money for the Institute, but also for many it was life changing. Alan Wordie wrote. "Before the expedition I had read about men living off seal and penguin,



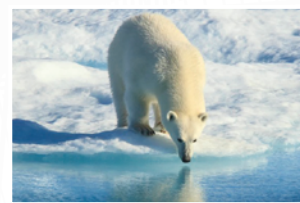
Ship's deck © Derek Kyostia

rowing and sailing in the Antarctic winter and keeping their inner flame alight but until I had felt and touched the cold, the wind and the storms, I had no idea. Now having made this trip I can fully respect Shackleton, his crew and especially my own flesh and blood. Sir James Wordie."

This wonderful Arctic trip, again an important fund-raiser, will start with two days in Oslo with a reception at the Fram Museum in the company of its Director Geir Kløver. Joining us is our Chairman Rear Admiral Nick Lambert and invaluable Hon Secretary, Celene Pickard. We then fly to Longyearbyen where the mighty Akademik Sergey Vavilov will await us.

Before we drop our lines and fire up the bow thrusters, a visit to the outstanding museum in Longyearbyen is not to be missed. That

afternoon, we will set sail to discover the superb wildlife that Spitsbergen has to offer, including a plethora of sea birds and a great number of marine mammals like the walrus and of course the King of the Ice, the polar bear.



King of the Ice © Caro Mantella

History will be brought to life with Frank Wild, Eric Marshall, Ernest Joyce, Herbert Ponting, Roald Amundsen and many others who ventured on this fascinating archipelago. Bookings have been brisk with already 15 people signed up so please register your interest with Angie Butler on email: angie@ice-tracks.com or info@ice-tracks.com

More information on this incredible trip can be found online: www.ice-tracks.com

MODERN DAY EXPLORERS – Dr Victor Boyarsky



Dr Victor Boyarsky is a Russian who knows more about ice than most. He is a radio glaciologist

in charge of Russia's State Polar museum and head of the Barneo base in the Arctic.

It is from this floating village on ice that polar explorers attempt their expeditions to the North Pole. Barneo is a summer camp, set-up in late March each year through highly complex logistics, incorporating Ilyushin-76, Antonov-74

and Mi-8 flights from Moscow and Siberia. Once the ice runway has been prepared, using tractors parachuted onto the ice, AN-74 flights deliver the camp infrastructure and Barneo usually opens its doors to the first passenger flight in early April. If the ice flow cracks the camp is lifted and set on another.

Boyarsky who is renowned for taking daily snow baths in sub zero temperatures says of his many clients...

"It is not easy to go to the North Pole. It requires skill. I have led many expeditions and I know how people feel. Most of them are suffering!"



DID YOU KNOW?

SPRI has teamed up with museums from Norway, Sweden and the UK to strengthen and spread the knowledge of polar history, science and exploration by creating The Polar Museums Network (PMN).

Membership of the PMN is also open to all persons and institutions evidencing an abiding interest in the collection, preservation, research and interpretation of polar artefacts.



Visit www.polar museumsnetwork.org/



FoSPRI dates for the diary

Please visit: www.spri.cam.ac.uk/friends/events for further details



Scott Polar Research Institute
University of Cambridge

Shackleton 'ENDURANCE' Expedition Centenary Celebration

On Saturday 21 November 2015, the Scott Polar Research Institute will host a day of talks, followed by a black tie dinner at Jesus College, to mark the centenary of Shackleton's Endurance Expedition.

As we anticipate a high level of interest in this event, we will be holding a ballot for the limited number of tickets. If you would like to be considered for this ballot, please email your contact details to ras79@cam.ac.uk or telephone 01223 336540 **before 1 September 2015.**

Please note that there is a registration fee of £25 per person for the day and £100 per person for the gala dinner. Successful applicants will be contacted shortly after the deadline.

General

EVENT	DATE:	TIME:	LOCATION:	COST/BOOKING
Michaelmas Term Lectures	Saturday 10 October, Saturday 24 October	7.30pm	SPRI Lecture Theatre	FREE – No need to book (£5 non members)
Friends of SPRI AGM	Saturday 7 November	TBC	SPRI Lecture Theatre	TBC
Friends of SPRI Spitsbergen Explorer Voyage	Monday 13 June 2016	–	Arctic	Register your interest: info@ice-tracks.com

Museum events

EVENT	DATE:	TIME:	LOCATION:	COST/BOOKING
Ice Limits, Emma Stibbon: Drawing the Polar Regions	11 June - 5 September	10am – 4pm Tues-Sat	THE POLAR MUSEUM	FREE
'Drawing out Science' Activity Day. Get inspired by science! Suitable for families and children of all ages	Wednesday 5 August	11am – 4pm		FREE – http://drawingoutscience.eventbrite.co.uk
By Endurance we Conquer: Shackleton and his Men	22 Sept – 18 June 2016	–		FREE
The Big Game Night – Explorers & Collectors Let battle for museum domination commence. 18+	Thursday 22 October	6pm – 7.30pm		FREE – http://biggamenight2.eventbrite.co.uk

Further information on the Museum events and exhibitions visit www.spri.cam.ac.uk/museum/



Heather in
Antarctica 2014

A BIG THANK YOU

All the members of the Friends Committee would like to say a big thank you to our former Committee member Heather Lane who was Editor-In-Chief of this newsletter for many years. We all echo the sentiments expressed by our Secretary Celene: "I would like to express my enormous gratitude for the incredible amount of unfailing support and help that Heather gave over 10 years, to the Friends and to me personally. Her dedication, sound advice, and loyal commitment were invaluable in helping me to achieve my role as secretary, as well as cementing a strong bond between the Institute and the Friends. We wish her luck in her new roles".



A note from the Executive Secretary



Any enquiries about membership (including subscription rates and renewals) should be sent to Celene Pickard, email: friendsPA@spri.cam.ac.uk

NEW FRIENDS – A very warm welcome is extended to all new members.

PASSING FRIENDS – 'We are sad to note the passing of Keith Shackleton, who died in April, a renowned artist and a Life member of the Friends'

THANK YOU – We would like to say a big thank you to Sally Stonehouse, our incredible tea lady for many, many years. After the recent passing of her husband Bernard, she has now retired to Hampshire to be nearer to family. We shall miss her greatly. Thank you to Angela Haines our last remaining tea lady, who could now do with some help!

CAN YOU HELP?

We are looking for volunteers to help serve the refreshments at our Saturday night lecture evenings, during the Lent and Michaelmas Terms. Please email friendsPA@spri.cam.ac.uk if you are interested.

HOW TO CONTACT US?

Friends Secretary – Celene Pickard
Email: friendsPA@spri.cam.ac.uk
Tel: 01223 336 540
Address: The Friends Office, Scott Polar Research Institute, Lensfield Road, Cambridge CB2 1ER, England

